



# THE FUTURE OF CONSUMER PRODUCTS AND RETAIL WITH SAP S/4HANA®

How the digital platform  
enables greater insights,  
enhanced usability, and  
quicker decision making





SAP S/4HANA® stands as a cutting-edge platform, poised to revolutionize the consumer-packaged goods and retail industry by facilitating the establishment of a dynamic digital supply chain. Moreover, it empowers enterprises with real-time financial insights, a pivotal achievement that numerous companies ardently pursue on their journey to attain world-class status.

This platform allows companies to:

**Optimize demand forecasting** with AI and machine learning by utilizing data and model training to more accurately predict demand and adapt to changing market conditions.

**Leverage consumer data and insights** using advanced analytics and reporting to empower data-driven decisions, enabling a 360-degree consumer view.

**Improve supply chain resilience** by integrating processes, enhancing visibility, and enabling collaboration across the entire supply chain network.

**Drive personalized omnichannel customer experiences** with real-time behavioral insights to increase customer satisfaction and brand loyalty.

**Adhere to regulatory and financial compliance** using tools that monitor, report, and ensure reduction of compliance risks.

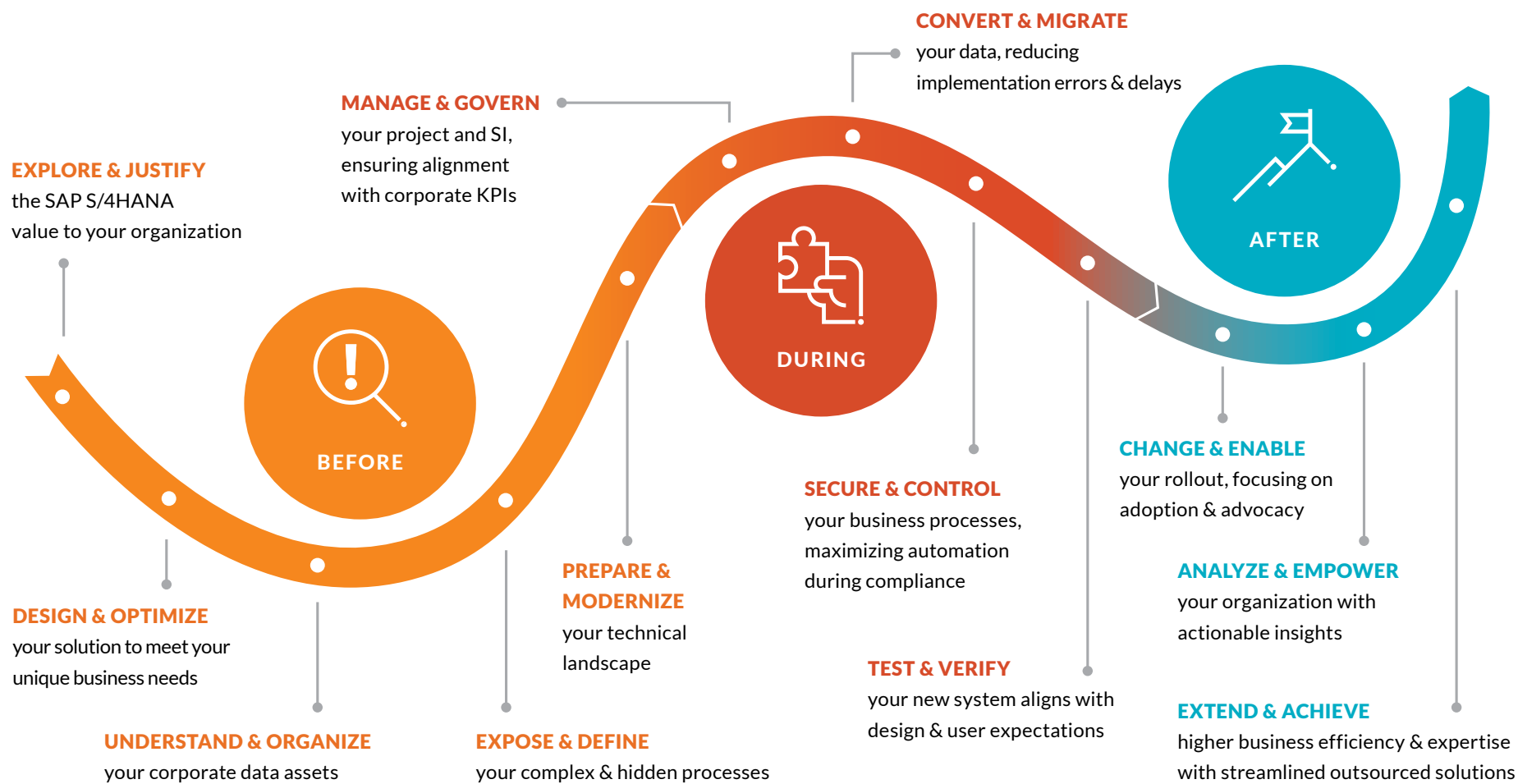
**Advance innovation and sustainable product development** by facilitating collaboration among different teams and providing a unified view of data accelerating time-to-market and improving sustainability metrics.

**Enhance operational and financial efficiency** by unifying processes and data on a single platform with S/4HANA, eliminating data silos and redundant tasks.

These advantages, coupled with the looming 2027 deadline impacting companies currently using SAP ECC, has spurred a significant surge in clients opting to migrate their SAP landscapes and transition to SAP S/4HANA.

## Navigate your SAP S/4HANA journey with confidence

The journey to a successful migration starts with justifying the value, creating a strong business case and developing a sound strategy. This will be a multi-year journey to realize that value, with ups and downs that must be continually monitored to keep the journey on track. Having good people, processes and technology to make sure the focus is not only on the end-point of the migration, but on the long-term digital transformation of the organization. This provides consumer products and retail providers with the opportunity to strategically enhance profitability, elevate product and service quality, all the while adeptly navigating intricate sustainability and financial regulations. Protiviti works with customers in every phase of this journey, which is outlined below:



## Product and Solution Offerings

### RISE TO SAP S/4HANA

#### Common issues addressed:

Implementation and data migration strategies that focus on business processes, solution design, data and the deployment of SAP S/4HANA.

#### Our focus areas include:

- Digital Roadmap
- Solution Design
- Project Management & Governance
- Testing Strategy & Automation
- Organizational Change Enablement
- Cloud Strategy and Optimization
- SAP S/4HANA Data Migration

#### Key SAP Products:

- SAP S/4HANA
- SAP Fiori
- SAP Business Technology Platform

### DATA, ANALYTICS & AI

#### Common issues addressed:

Improve data quality, integration, and migration to SAP S/4HANA, streamlining data governance with proven strategies.

#### Our focus areas include:

- Data Quality & Governance
- Master Data Management
- Data Strategy & Warehousing
- Predictive & Business Analytics
- Machine Learning & IoT

#### Key SAP Products:

- SAP Data Services
- SAP BW/4HANA
- SAP Datasphere
- SAP HANA
- SAP MDG
- SAP Analytics Cloud
- SAP BusinessObjects PCE

### SECURITY & COMPLIANCE

#### Common issues addressed:

Streamline user and role management, identify and remove security risks (such as segregation of duties) and provide assistance to meet regulatory compliance requirements.

#### Our focus areas include:

- Governance, Risk & Compliance
- SAP S/4HANA Risk Management
- Identity & Access Management
- Data Privacy and Cybersecurity
- Internal Audit
- Intelligent Automation

#### Key SAP Products:

- SAP GRC (AC, PC, RM)
- SAP IAG
- SAP IDM
- SAP ETD
- SAP AVM by Pathlock
- SAP Sustainability Control Tower

### FINANCE TRANSFORMATION & PROCESS OPTIMIZATION

#### Common issues addressed:

Provide SAP S/4HANA Implementation support, drive finance and procure-to-pay optimization, develop SAP Analytics Cloud/ BPC/IBP/Group reporting strategy and implementation.

#### Our focus areas include:

- Business Process Optimization
- Financial Close
- Process Mining & Analysis
- Financial Planning & Analysis
- End-to-End Process Implementation and Integration

#### Key SAP Products:

- SAC Cloud & Planning
- SAP Central Finance
- SAP BPC
- SAP Signavio
- SAP IBP
- SAP HANA Cloud



## Customer Success Stories



### Optimizing business and FP&A processes leveraging SAP S/4HANA and SAP Analytics Cloud® for a global food chain

A multinational restaurant chain had implemented SAP S/4HANA globally with unmet business, reporting and planning requirements, resulting in manual workarounds and process inefficiencies. Protiviti launched a sprint-based approach to remediate open issues and successfully enabled SAP S/4HANA and SAP Analytics Cloud, optimizing business, budgeting and planning processes.

- Improved process efficiency
- Automated manual activities
- Enabled visibility to company performance
- Optimized planning cycle times within FP&A Processes



### Leveraging data for meaningful insights and game-changing business intelligence

A leading North American beverage wholesaler sought to better understand demand, drive sales goals and optimize its supply chain but struggled with multiple, disparate systems. Protiviti reduced multiple platforms to a single source of truth, using SAP for ERP, HANA for data management, and Power BI and SAP BusinessObjects for Analytics, unlocking meaningful insights and saving hundreds of thousands of dollars.

- Optimized inventory and customer backorder management
- Improved forecasting accuracy
- Enabled self-service tools
- Built trust in corporate data, increasing user adoption



### Building compliant security access and enhancing the internal controls framework

A leading global retail and fashion company was implementing SAP S/4HANA for Fashion and Vertical Business and struggling with manual SAP security access processes. Protiviti was engaged to develop an internal controls framework, design security access and implement SAP GRC to automate user provisioning requests.

- Visibility into key risks and internal controls
- 100% SOD conflict-free task-based security roles
- 95% SOD conflict-free business roles
- Auto provisioning of access for retail store users
- Workflow-based provisioning of access for corporate users

## Partners

---



## Contact

---

### ARIC QUINONES

Managing Director

SAP Practice Leader

Aric.Quinones@protiviti.com

### CAROL RAIMO

Managing Director

Global CPS Leader

Carol.Raimo@protiviti.com

### TONI LASTELLA

Managing Director

Technology Consulting Global CPS Leader

Toni.Lastella@protiviti.com

Protiviti ([www.protiviti.com](http://www.protiviti.com)) is a global consulting firm that delivers deep expertise, objective insights, a tailored approach and unparalleled collaboration to help leaders confidently face the future. Protiviti and our independent and locally owned Member Firms provide clients with consulting and managed solutions in finance, technology, operations, data, analytics, digital, legal, HR, governance, risk and internal audit through our network of more than 85 offices in over 25 countries.

Named to the 2023 Fortune 100 Best Companies to Work For® list, Protiviti has served more than 80 percent of Fortune 100 and nearly 80 percent of Fortune 500 companies. The firm also works with smaller, growing companies, including those looking to go public, as well as with government agencies. Protiviti is a wholly owned subsidiary of Robert Half (NYSE: RHI). Founded in 1948, Robert Half is a member of the S&P 500 index.

© 2023 Protiviti Inc. An Equal Opportunity Employer M/F/Disability/Veterans. Protiviti is not licensed or registered as a public accounting firm and does not issue opinions on financial statements or offer attestation services. All registered trademarks are the property of their respective owners.

**protiviti**<sup>®</sup>  
Global Business Consulting