

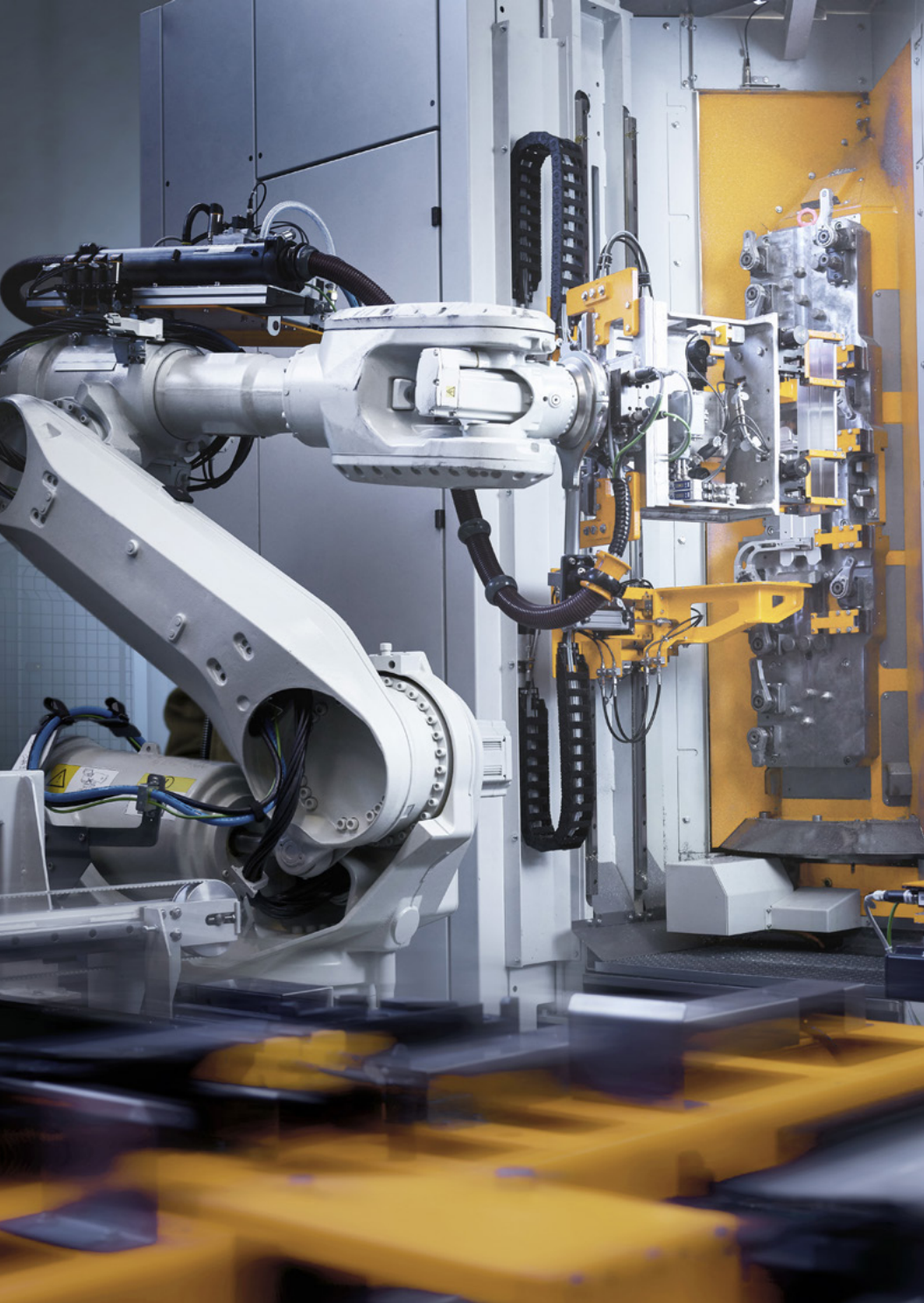
A large industrial robotic arm is shown in the foreground, positioned over a work area. The background features a multi-story industrial building with a glass facade and various mechanical components. The scene is set in a modern manufacturing environment with bright lighting and a clean, organized layout.

# THE FUTURE OF MANUFACTURING WITH S/4HANA®

How the digital platform  
enables greater insights,  
enhanced usability, and  
quicker decision making

**protiviti**®  
Global Business Consulting





S/4HANA® is a next generation platform that allows the enablement in the Manufacturing and Distribution industry to create a digital supply chain and empowers the real-time finance insights many companies are striving to achieve to become world-class. This platform allows companies to:

**Improve demand forecasting** with AI and machine learning by utilizing master data and third-party elements (e.g. weather).

**Simplify and Streamline MRP** with the ability to determine material shortages, advance scheduling, etc. using MRP live and running classic MRP quicker.

**Provide transparency to inventory and material flows** due to extended capabilities which holistically support all levels of warehouse complexity from distribution to logistics.

**Gather analytic insights faster** to allow businesses to make quicker decisions and avoid use of multiple systems and/or screens which could include a faster close process.

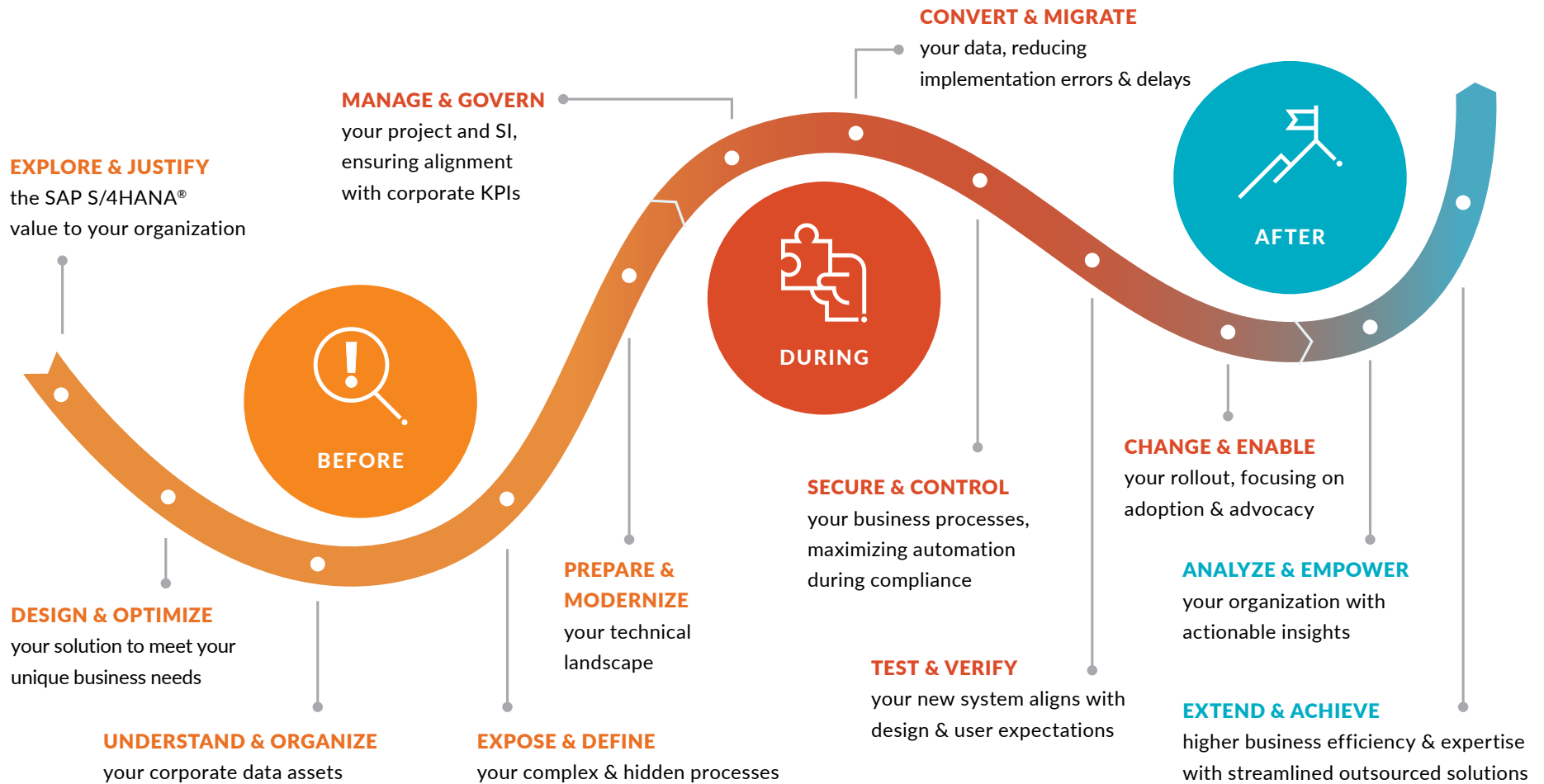
**Leverage built-in AI and machine learning** with the benefits of combined Profitability Analysis to analyze profitability of markets, Lines of Businesses, channels, products, and segments.

**Enhance cost management** to amplify transparency into the drivers of costs and variances with Material Ledger and combined benefits of Standard and Average costing.

These benefits, combined with the impending 2027 deadline for any companies already on SAP ERP to move to S/4HANA® has led to a wave of clients migrating their SAP environments.

## Navigate your SAP S/4HANA® journey with confidence

The journey to a successful migration starts with justifying the value, creating a strong business case and developing a sound strategy. This will be a multi-year journey to realize value, with ups and downs that must be continually monitored to keep the journey on track. Having good people, processes and technology to make sure the focus is not only on the end-point of the migration, but on the long-term digital transformation of the organization. This allows manufacturers and distributors to plan their strategy to improve profitable sustainability, improve products and services while managing complex sustainability and financial regulations. Protiviti works with customers in every phase of this journey, which is outlined below:



## Products and Solution Offerings

### RISE TO SAP S/4HANA®

#### Common issues addressed:

Implementation and data migration strategies that focus on business processes, solution design, data, and the deployment of S/4HANA®.

#### Our focus areas include:

- Digital Roadmap
- Solution Design
- Project Management & Governance
- Testing Strategy & Automation
- Organizational Change Enablement
- Cloud Strategy and Optimization
- S/4HANA® Data Migration

#### Key SAP Products:

- SAP S/4HANA®
- SAP Fiori
- SAP Cloud Platform

### DATA, ANALYTICS & AI

#### Common issues addressed:

Improve data quality, integration, and migration to S/4HANA®, streamlining data governance with proven strategies.

#### Our focus areas include:

- Data Quality & Governance
- Master Data Management
- Data Strategy & Warehousing
- Predictive & Business Analytics
- Machine Learning & IoT

#### Key SAP Products:

- SAC Cloud & Planning
- SAP Data Services
- SAP BW/4HANA
- SAP Data Warehouse Cloud
- SAP HANA
- SAP MDG
- SAP Analytics Cloud
- Data Warehouse Cloud
- BOBJ PCE

### SECURITY & COMPLIANCE

#### Common issues addressed:

Streamline user and role management, identify and remove security risks (such as segregation of duties) and provide assistance to meet regulatory compliance requirements.

#### Our focus areas include:

- Governance, Risk & Compliance
- S/4HANA® Risk Management
- Identity & Access Management
- Cybersecurity
- Data Privacy & Security
- Internal Audit

#### Key SAP Products:

- GRC 12
- IAG
- Identity Management
- Event Threat Detection
- AVM by Pathlock
- Sustainability Control Tower

### FINANCE TRANSFORMATION & PROCESS OPTIMIZATION

#### Common issues addressed:

Provide S/4HANA® and CFIN Implementation support, drive finance and procure-to-pay optimization, develop SAP Analytics Cloud/ BPC/ IBP/Group reporting strategy and implementation.

#### Our focus areas include:

- Business Process Optimization
- Financial Close
- Process Mining & Analysis
- Financial Planning & Analysis
- End-to-End Process Implementation and integration

#### Key SAP Products:

- SAP Central Finance
- SAP BPC
- SAP Process Mining
- SAP IBP
- HANA Cloud



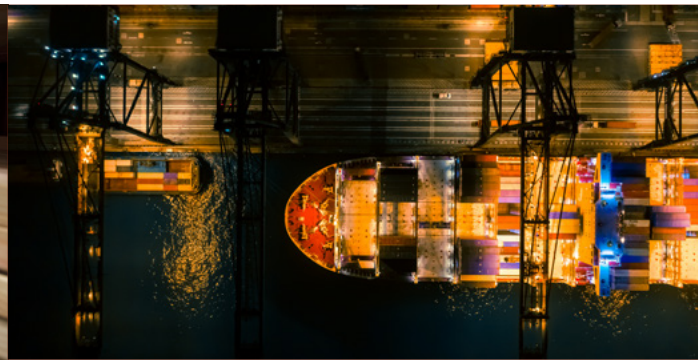
## Customer Success Stories



### Maximizing the investment during an SAP S/4HANA® assessment with a detailed roadmap

A global building products distributor had grown by acquisition and as a result ended up with several different ERP solutions and a disparate systems environment. Protiviti leveraged our solution design approach to determine the best consolidation strategy.

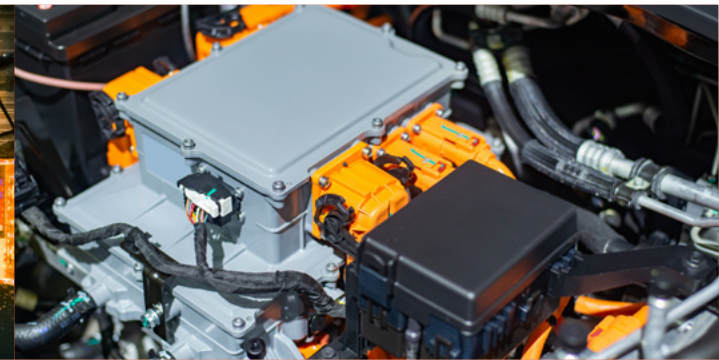
- Reduced complexity of the application architecture
- Streamlined common processes across business units
- Improved executive experience by refining management and operational reporting
- Reduced costs of ongoing IT maintenance



### Global manufacturing leader drives business value with SAP S/4HANA®

A global leader in fertilizer manufacturing and distribution, the client had a highly customized SAP environment that required manually intensive workarounds. With customer and plant expansions, they began experiencing data entry errors, negatively impacting productivity.

- Designed processes to meet needs of specific functions reducing duplicative work
- Enhanced reporting & data by providing timely access to accurate data
- Empowered client with automated, scalable processes
- Improved productivity by reducing data entry errors



### Global battery manufacturer improves data visibility

A global consumer products and goods company needed to understand its current SAP hierarchy and product hierarchy design. After identifying gaps, pain points and challenges, the client needed a best-fit solution for each data hierarchy with improved data quality in reporting.

- Developed a new and improved product hierarchy
- Streamlined reporting structure
- Immediate improvement of commercial and financial reporting
- Better positioned the client to achieve its longer term goal of migrating to S/4HANA®

## Partners

---



## Contact

---

**ARIC QUINONES**

Managing Director

SAP Practice Leader

Aric.Quinones@protiviti.com

**SHARON LINDSTROM**

Managing Director

Global Manufacturing and Distribution Leader

Sharon.Lindstrom@protiviti.com

Protiviti ([www.protiviti.com](http://www.protiviti.com)) is a global consulting firm that delivers deep expertise, objective insights, a tailored approach, and unparalleled collaboration to help leaders confidently face the future. Protiviti and its independent and locally owned Member Firms provide clients with consulting and managed solutions in finance, technology, operations, data, digital, legal, governance, risk and internal audit through its network of more than 85 offices in over 25 countries.

Named to the 2022 Fortune 100 Best Companies to Work For® list, Protiviti has served more than 80 percent of Fortune 100 and nearly 80 percent of Fortune 500 companies. The firm also works with smaller, growing companies, including those looking to go public, as well as with government agencies. Protiviti is a wholly owned subsidiary of Robert Half (NYSE: RHI). Founded in 1948, Robert Half is a member of the S&P 500 index.

**protiviti®**  
*Global Business Consulting*